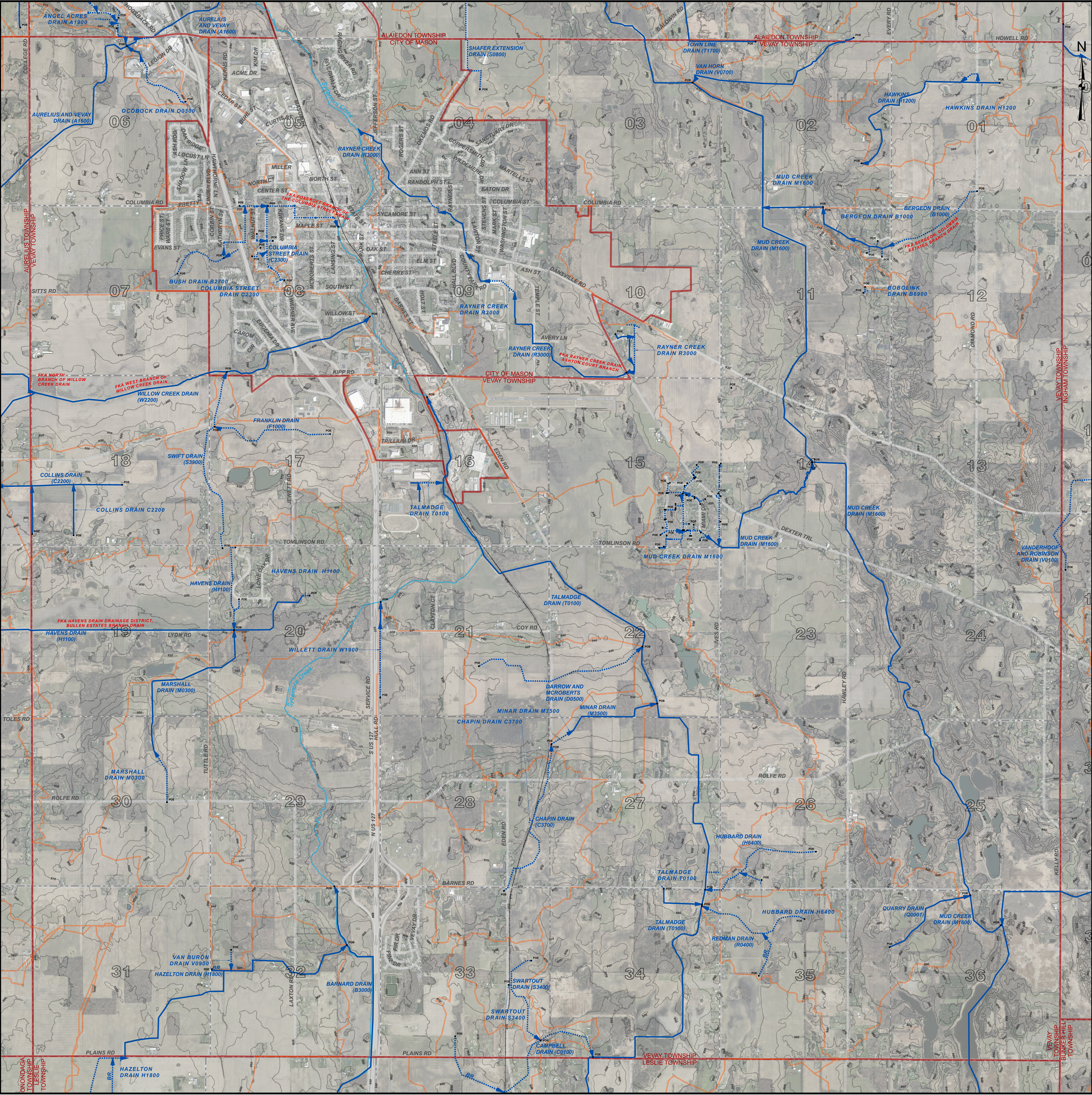


VEVAY TOWNSHIP, T.2N. - R.1W. , INGHAM COUNTY, MICHIGAN



PATRICK E. LINDEMANN
INGHAM COUNTY DRAIN COMMISSIONER

PRELIMINARY

VEVAY TOWNSHIP DRAIN MAP
T.2N. - R.1W.
INGHAM COUNTY, MICHIGAN



707 BURL AVENUE
P.O. BOX 220
MASON, MI 48854
PHONE: (517)-676-8395
FAX: (517)-676-8364

- LEGEND**
- MUNICIPAL BOUNDARIES
 - SECTIONS
 - COUNTY
 - DRAINAGE DISTRICT BOUNDARIES
 - OTHER INTERCOUNTRY DISTRICT BOUNDARIES
 - OPEN DRAIN
 - CLOSED DRAIN
 - ROADS
 - RAILROADS
 - NATURAL WATERCOURSE
 - RED = FORMERLY KNOWN AS

DISCLAIMER:

This map is a generalized representation of established drain routes and courses and/or drainage district boundaries. It is provided by the Ingham County Drain Commissioner for reference and display purposes only and does not confirm, create, refute, remove, expand, alter or otherwise affect any rights or obligations recognized or imposed by federal, state or local law, ordinance, regulation or rule.

0 0.25 0.5 1 Miles

1 INCH = 1,000 FEET

DRAIN INDEX

Drain No.	Drain Name	Drain No.	Drain Name	Drain No.	Drain Name
A1600	AURELIUS AND VEVAY DRAIN	H1100	HAVENS DRAIN	S0800	SHAHER EXTENSION DRAIN
A1900	ANGEL ACRES DRAIN	H1200	HAWKINS DRAIN	S3400	SWARTOUT DRAIN
B0500	BATES DRAIN	H1800	HAZELTON DRAIN	S3900	SWIFT DRAIN
B1000	BERGEON DRAIN	H6400	HUBBARD DRAIN	T0100	TALMADGE DRAIN
B3000	BARNARD DRAIN	M0300	MARSHALL DRAIN	T1700	TOWN LINE DRAIN
B6900	BOBOLINK DRAIN	M1600	MUD CREEK DRAIN	V0100	VANDERHOOF AND ROBINSON DRAIN
C0100	CAMPBELL DRAIN	M3500	MINAR DRAIN	V0700	VAN HORN DRAIN
C2200	COLLINS DRAIN	O0300	OCOBOCK DRAIN	V0900	VAN BURON DRAIN
C3700	CHAPIN DRAIN	Q0001	QUARRY DRAIN	W1900	WILLETT DRAIN
D0500	DARROW AND MCROBERTS DRAIN	R0400	REDMAN DRAIN	W2200	WILLOW CREEK DRAIN
F1000	FRANKLIN DRAIN	R3000	RAYNER CREEK DRAIN		